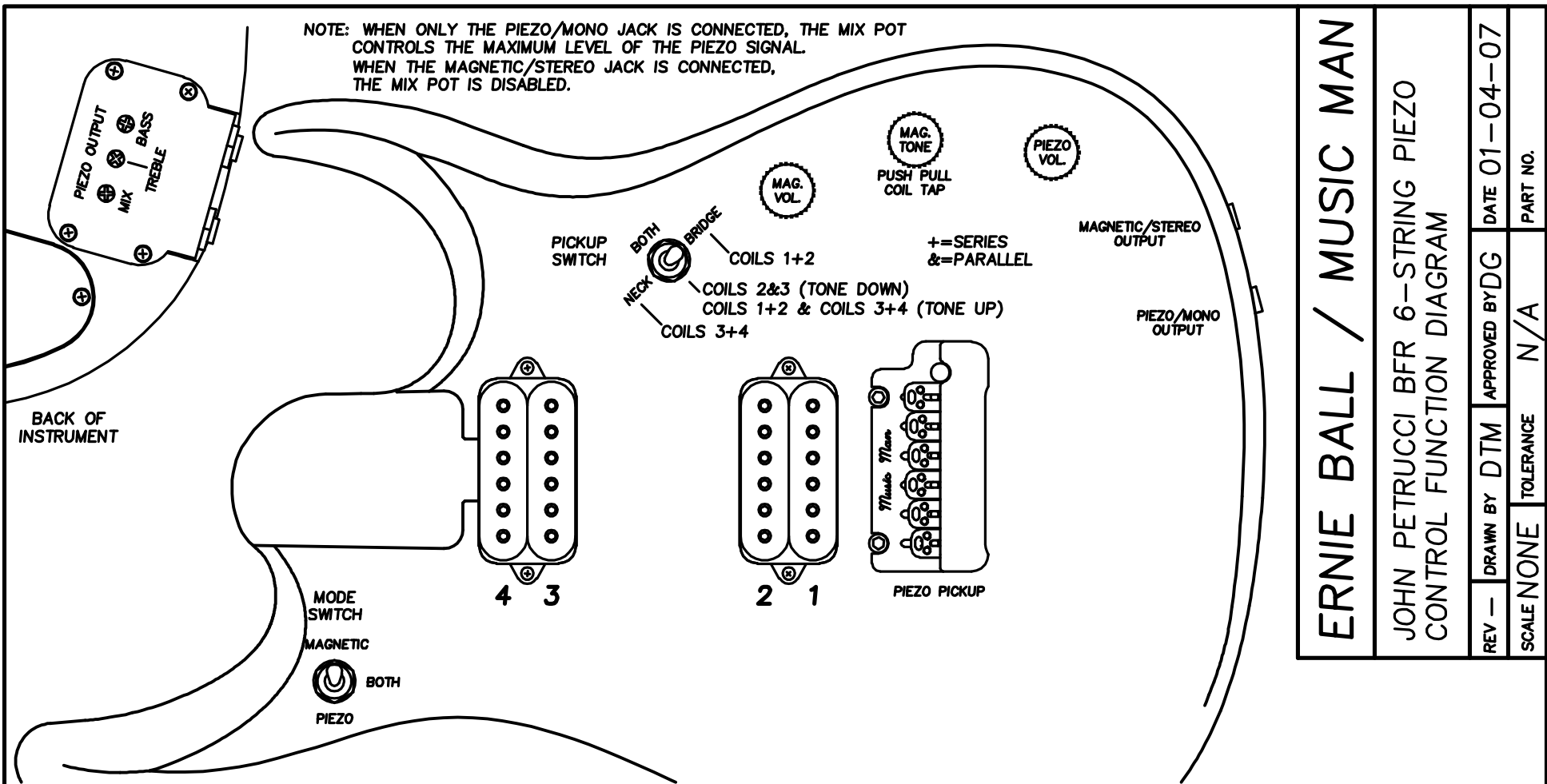


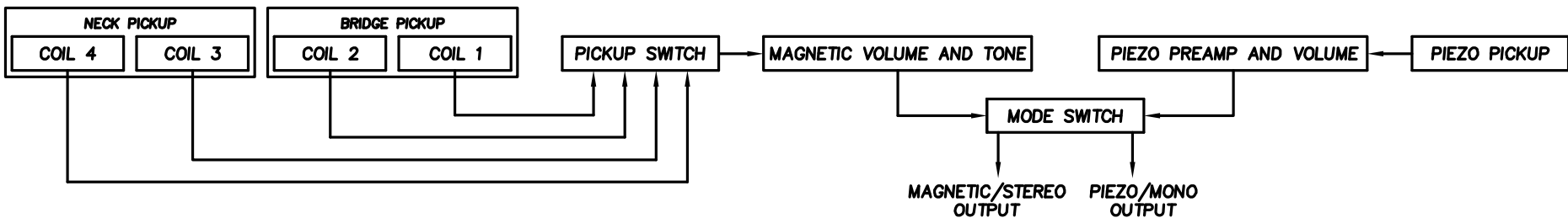
NOTE: WHEN ONLY THE PIEZO/MONO JACK IS CONNECTED, THE MIX POT CONTROLS THE MAXIMUM LEVEL OF THE PIEZO SIGNAL. WHEN THE MAGNETIC/STEREO JACK IS CONNECTED, THE MIX POT IS DISABLED.



# ERNIE BALL / MUSIC MAN

JOHN PETRUCCI BFR 6-STRING PIEZO CONTROL FUNCTION DIAGRAM

REV -	DRAWN BY DTM	APPROVED BY DG	DATE 01-04-07
SCALE NONE	TOLERANCE N/A	PART NO.	



### MAGNETIC/STEREO OUTPUT-

WHEN USED WITH A MONO CABLE, THIS OUTPUT PROVIDES A PASSIVE SIGNAL FROM THE MAGNETIC PICKUPS ONLY.  
WHEN USED WITH A STEREO (TRS) CABLE, TIP OUTPUTS PASSIVE MAGNETIC SIGNAL; RING OUTPUTS BUFFERED PIEZO SIGNAL.

### PIEZO/MONO OUTPUT-

USE MONO CABLE ONLY.  
WHEN ONLY THIS JACK IS CONNECTED, A BUFFERED AND MIXED COMBINATION OF THE MAGNETIC AND PIEZO SIGNALS IS PRODUCED.  
WHEN BOTH JACKS ARE USED, THIS OUTPUT WILL PRODUCE THE BUFFERED PIEZO SIGNAL ONLY; THE MAGNETIC SIGNAL IS DIVERTED TO THE MAGNETIC/STEREO OUTPUT.